

WCSS RESOURCES

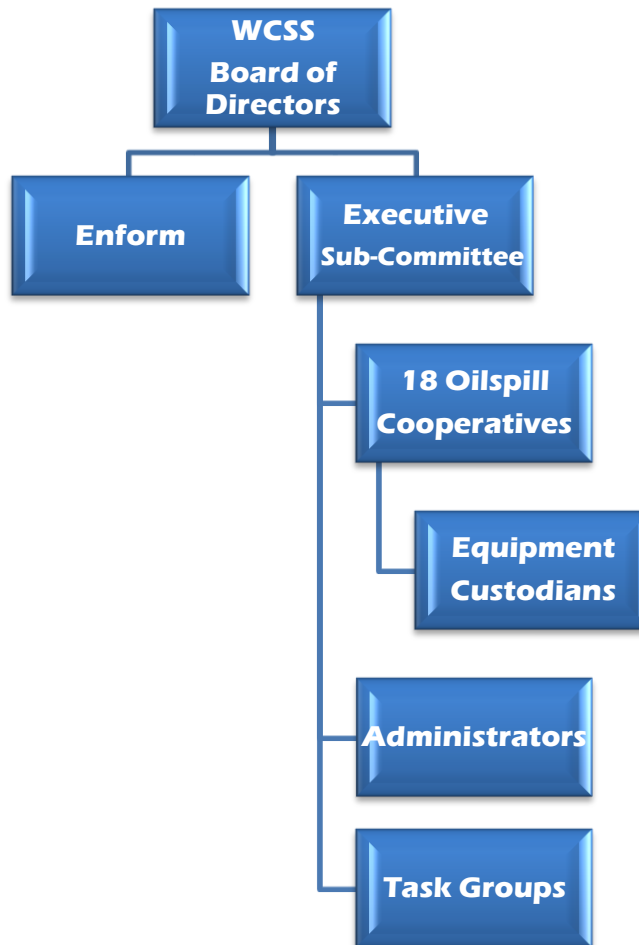
2.4

For specific information contact:

Western Canadian Spill Services Ltd. (WCSS)
Box 503, 3545 - 32 Avenue NE
Calgary, AB T1Y 6M6

24 Hour:..... 1 (866) 541-8888
Telephone:..... (403) 250-9606
Facsimile: (403) 291-9408
E-Mail..... info@wcss.ab.ca

STRUCTURE



WCSS CONTACTS

Managing Director

Alan B. McFadyen

Enform
1538 - 25 Avenue N.E.
Calgary, AB T2E 8Y3

Telephone: (403) 250-0882
Facsimile: (403) 291-9408
Cellular: (403) 860-8985
E-Mail: amcfadyen@enform.ca

Oil Spill Coordinator

Michael Locke

Enform
1020 - 20 Avenue
Nisku, AB T9E 7Z6

Telephone: (780) 955-6008
Facsimile: (780) 955-2454
Cellular: (780) 288-4114
E-Mail mlocke@enform

Accounting

Sheila Wooldridge

Enform
1538 - 25 Avenue N.E.
Calgary, AB T2E 8Y3

Telephone: (403) 250-6277
Facsimile: (403) 291-9408
E-Mail swooldridge@enform.ca

Administration

Veena Panicker

Enform
1538 - 25 Avenue N.E.
Calgary, AB T2E 8Y3

Telephone: (403) 769-9788
Facsimile: (403) 291-9408
E-Mail aomelian@enform.ca

Oil Spill Contingency Manual

Shannon Jarrell

Enform
1538 - 25 Avenue N.E.
Calgary, AB T2E 8Y3

Telephone: (403) 250-0887
Facsimile: (403) 291-9408
E-Mail sjarrell@enform.ca

Alberta Provincial Co-op
Chairman

Les Swelin

Pembina Pipelines Corporation

Telephone: (403) 638-3852
Facsimile: (403) 638-3488
Cellular: (403) 638-6020
E-Mail lswelin@pembina.com

Internet Web Site

<http://www.wcss.ab.ca>

WCSS EXECUTIVE SUB-COMMITTEE

Les Swelin
Area M Chairman
Pembina Pipeline
Telephone: (403) 638-3852
Facsimile:.....(403) 638-3488
Cellular.....(403) 638-6020

Trent Myck
Area G Chairman
ESC Advisor
Imperial Oil
Telephone: (403) 621-6902
Facsimile..... (780) 894-7373

Ken Chalmers
Zone 1
Co-op Areas P, Q, S
Telephone:.....(403) 861-3645
Facsimile:.....(403) 845-4738

Marvin St. Louis
Zone 2
Co-op Area H, M, N, O, U
Telephone:.....(780) 877-3784
Facsimile:.....(780) 877-3794

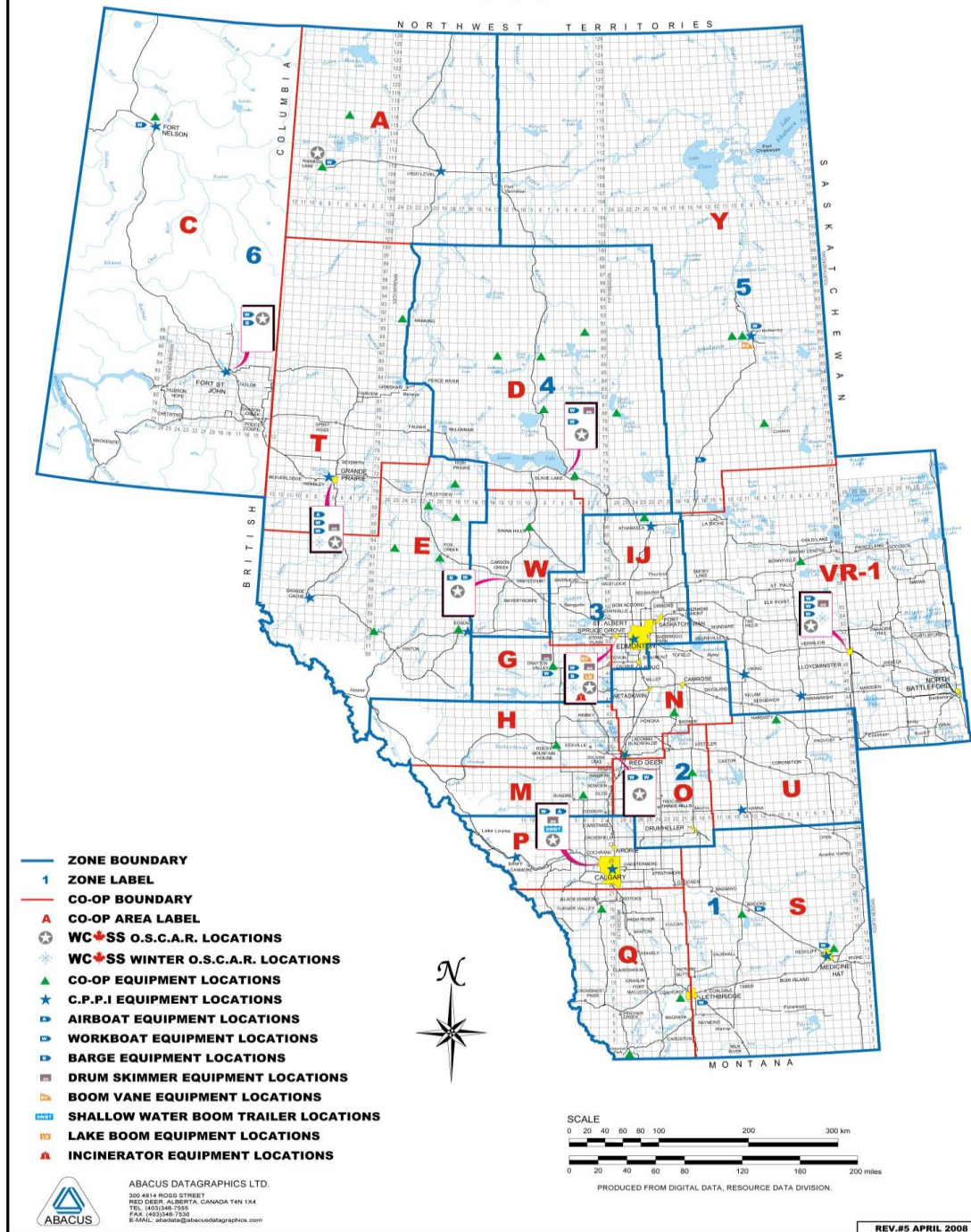
Dave Clough
Zone 3
Co-op Area G, IJ
Telephone:.....(403) 844-5005
Facsimile:.....(403) 845-2195

Lorne Schmidt
Zone 4
Co-op Area D, W
Telephone:.....(403) 501-8673
Facsimile:.....(403) 377-2635

Mike Gadde
Zone 5
Co-op Areas VR-1, Y
Telephone:.....(403) 296-7765
Facsimile:.....(403) 296-7761

James Barbour
Zone 6
Co-op Areas A, C, E, T
Telephone:.....(403) 556-6930
Facsimile:.....(403) 205-7664

WC+SS OIL SPILL COOPERATIVE BOUNDARIES 2008



WCSS MANDATE

The Western Canadian Spill Services' mandate is to ensure the provision of cost effective, integrated, emergency response capabilities and to continually improve and communicate to our customers, stakeholders and regulators all aspects of our business. This includes planning, preparedness / response and research and development for the petroleum industry. WCSS provides the minimum industry standard for oil spill preparedness in Western Canada.

WCSS REGIONAL EQUIPMENT DESCRIPTION

Equipment available to WCSS members includes:

WCSS OSCARS

These Oil Spill Containment and Recovery (OSCAR) trailers, valued at approximately \$300 K, contain a minimum of 300 metres (*985 feet*) of boom, skimmers, pumps and hardware designed to contain and recover a hydrocarbon spill in surface water.

Mini-OSCAR

A smaller version of the OSCAR, each of these trailers is slightly different, but typically contains a minimum of 100 metres (*300 feet*) of boom, 305 metres (*1,000 feet*) of rope, skimmers, pumps and sorbents.

Winter OSCAR

These units contain ice assessment and cutting equipment, safety equipment, hardware and other specialized equipment for recovery of oil from under ice.

Incinerator

The air curtain incinerator quickly disposes of oil spill debris without producing dense black smoke. A curtain of air forced diagonally into the burning chamber drives the dense soot particles back into the fire to be completely burned in an oxygen-rich environment with temperatures of approximately 800 °C (*1,472 °F*). The unit is completely road transportable and requires prior approval from the Energy Resources Conservation Board (ERCB) and Alberta Environment in the province of Alberta or appropriate provincial oil spill lead government agency.

Lake Boom

Bigger than river boom, it has 30 centimetres (*12 inches*) of skirt and 30 centimetres (*12 inches*) of sail or freeboard. There is 305 metres (*1,000 feet*) of boom stored in a container.

Drum Skimmer

WCSS presently have two Elastec Drum Skimmers, and four Aqua-Guard drum/brush/disk skimmers. The Elastec skimmers have drums that rotate through oil and collect oil with a very small volume of water. They are typically used in very slow moving current, bell holes or stagnant water. One of these skimmers is air driven and requires the use of compressed air. The other has been converted to hydraulic and comes complete with a hydraulic power pak. The Aqua-Guard skimmers are all hydraulic and come complete with a diesel power pak and diesel driven single diaphragm pump. These skimmers have drums, brushes, or disks and operate in similar conditions to the Elastec skimmers.

Barge

These boats have the power to contend with fast flowing water, can transport heavy equipment to remote locations on a river, provide a stable working platform in water, and operate in a foot or less of water. The barges range in length from 5.5 metres (18 feet) to 7.3 metres (24 feet) and are all approximately 2.5 metres (8 feet) wide. All of the barges are powered by inboard jet engines that will vary in size depending on the age and size of the vessel.

Work Boat

WCSS has numerous workboats that have the capability to be used as utility and safety vessels. All of the workboats are in the range of 4.5 to 5.2 metres (16 to 17 feet) and most are powered by outboard jet engines.

Air Boat

These specialized boats have the ability to be used as safety or utility vessel in areas or environments such as ice or weed infested waters, where it is not practical or safe to use a standard jet boat.

Note: All WCSS Boats are equipped with two-way radios that operate on the following transmitting and receiving frequency: 159.48000 Mhz

Note: Regional equipment is in place to supplement company and Cooperative area spill response equipment.

WCSS EQUIPMENT CONTACT LIST

| Z O N E | CO-OP | EQUIPMENT STORAGE LOCATION | CUSTODIAN | CONTACT INFORMATION | EQUIPMENT | TRANSPORT REQUIREMENTS |
|------------------|-------|----------------------------------|----------------------------------|---|---|--|
| 1 | Q | Turner Valley | Talisman Energy Inc. | Dan Janida Ph: (780) 558-3757 ext. 245 | Mini-OSCAR | ¾ ton truck (ball hitch) |
| | | Pincher Creek Area | Shell Canada Ltd. | Dan Larson Ph: (403) 627-7265 Cell: (403) 627-9866 Fax: (403) 627-7292 24 hr: (403) 627-4200 | Mini-OSCAR | ¾ ton truck (ball hitch) |
| | P | Calgary | SWAT | Trever Miller Cell: (403) 863-7928 24-hr: 1-866-610-7928 Fax: (403) 901-1018 | OSCAR Airboat Aqua Dam Small diameter boom Drum Skimmer | Semi-truck ½-ton truck (ball hitch) |
| | S | Lethbridge | Midwest Pumps Ltd. | Adrian Schuurman Ph: (403) 329-0427 24 hr (403) 329-0427 Fax: (403) 327-4660 | Mini-OSCAR Muskrat | ¾ ton truck (ball hitch) ½ ton truck (ball hitch) |
| | | Brooks | P & H Oilfield Maintenance | Mike Wenner Ph: (403) 362-655 24 hr: (403) 362-6551 Cell: (403) 793-1420 Fax: (403) 362-0107 | OSCAR Mini-OSCAR Muskrat | Semi-truck ¾ ton truck (ball hitch) ½ ton truck (ball hitch) |
| | | Medicine Hat | P & H Oilfield Maintenance | Mike Wenner Ph: (403) 362-6551 24 hr: (403) 362-6551 Cell: (403) 793-1420 Fax: (403) 362-0107 | Mini-OSCAR | Semi-truck w/ flatbed |
| 2 | H | Sylvan Lake | Key Safety & Blowout Control | Rob Graefer 24 hr: 1-866-347-3911 Fax: (403) 887-3339 | OSCAR Muskrat Workboat | Semi-truck ½ ton truck (ball hitch) ¾ ton truck (ball hitch) |
| | | Rocky Mountain House | Challand Excavating Ltd. | Clint Challand Ph: (403) 845-2469 24 hr: (403) 845-2469 Cell: (403) 845-0018 Fax: (403) 845-4844 | Mini-OSCAR (2) | Semi-truck w/ flatbed |
| | M | Sundre | Pembina Pipeline Corporation | Les Swelin Ph: (403) 638-3852 24 hr: 1-800-360-4706 Cell: (403) 638-6020 Fax: (403) 638-3488 | Mini-OSCAR (2) | 1 ton truck (ball hitch) |
| | O | Big Valley | Trottier Trucking | Chad Ponto Ph: (403) 876-2250 24 hr: 1-800-662-7131 Cell: (403) 740-2674 Fax: (403) 876-2070 | OSCAR | Semi-truck |
| | N | Bashaw | Apache Canada Corp. | Marvin St. Louis Ph: (403) 877-3784 24 hr: (403) 726-3996 pgr: (403) 740-9082 Cell: (403) 740-6095 Fax: (403) 877-3794 | OSCAR | Semi-truck |
| | U | Hardisty | Greg's Contracting Services Ltd. | Greg Schmidt Trevor Bitzer Ph:(780) 888-3845 | OSCAR | Semi-truck |
| 3 | G | Drayton Valley | Answering Service | Area G Chairman or Alternate Ph: (780) 542-8738 24 hr: (780) 542-8738 | Mini-OSCAR Muskrat Drum Skimmer (air driven) Oily debris separation tank | Semi-truck w/ flatbed ½ ton truck (ball hitch) Semi-truck w/ flatbed |

| Z O N E | CO-OP | EQUIPMENT STORAGE LOCATION | CUSTODIAN | CONTACT INFORMATION | EQUIPMENT | TRANSPORT REQUIREMENTS |
|----------------------------|--------------|---|---|--|--|---|
| | | Acheson | Dicks Welding & Contracting | Rick Fairclough Ph:(780) 962-1503 Cell:(780) 983-3416 Dick Fairclough Ph: (780) 962-1503 Cell: (780) 914-0928 | OSCAR Workboat Wildlife Response Unit Barge Winter OSCAR Air Curtain Incinerator Drum skimmer (hydraulic) Boom vane (shallow draft) Inflatable Lake Boom Reel Bow Collector | Semi-truck ½ ton truck (ball hitch) ¾ ton truck (ball hitch) ½ ton truck (ball hitch) ¾ ton truck (ball hitch) Semi-truck w/ flatbed |
| | | Redwater | Imperial Oil Ltd. | ARC Resources Ph: (780) 987-8419 24 hr: (780) 987-3910 | Mini-OSCAR | Semi-truck w/ flatbed |
| 4 | D | Slave Lake | Slave Lake Specialties | Ben Dautel Ph: (780) 849-3863 24 hr : (780) 849-3863 Fax: (789) 849-4198 Cell: (780) 805-5366 | OSCAR Workboat (2) Drum skimmer (air driven) Lake Boom | Semi-truck ½ ton truck (ball hitch) Semi-truck w/ flatbed |
| | | Mitsue | Canetic Resources Mitsue Gas Plant | Murray Cronk Ph: (780) 849-7933 Fax: (780) 849-7989 Cell: (780) 805-2046 | Mini-OSCAR | Semi-truck w/ flatbed |
| | | Nipisi | Canadian Natural Resources Ltd. | Mark Russell (CNRL) Ph: (780) 849-702 Cell: (780) 849-1131 Fax: (780) 849-7003 Monty MacEwen (Vermilion) Ph: (780) 849-4303 Cell: (780) 849-1102 Fax: (780) 849-4866 | Mini-OSCAR | Semi-truck w/ flatbed |
| | | Red Earth | Plains Marketing Canada L.P. | Chris Labrie Ph: (780) 805-6002 Cell: (780) 805-5480 Fax: (780) 805-6004 | Mini-OSCAR | (2) Semi-truck w/ flatbed |
| | | Wabasca | Canadian Natural Resources Ltd. | Don Fox (CNRL) Ph: (780) 891-3092 Cell: (780) 891-0349 Fax: (780) 891-3139 Uwe Ruedrich (BMW Weatherford) Ph: (780) 891-2333 Cell: (780) 689-8564 Fax: (780) 891-2344 | Mini-OSCAR | Semi-truck w/ flatbed |
| | | Evi Field | Rainbow Pipeline | Wayne Denman Ph: (780) 624-3751 Ext. 222 Cell: (780) 618-3805 Fax: (780) 624-3138 | Mini-OSCAR | Semi-truck w/ flatbed |
| | W | Whitecourt | Smiley's Trucking | Dispatcher Ph: (780) 778-1997 24 hr: (780) 778-1997 Fax: (780) 778-3536 | OSCAR Workboat | Semi-truck ¾ ton truck (ball hitch) ½ ton truck (ball hitch) |
| | | Swan Hills | Ken's Steaming and Maintenance Co. Ltd. | Staff Ph: (780) 333-2533 Ph: (780) 333-2727 Cell: (780) 333-5079 Fax: (780) 333-2052 | Mini-OSCAR | Semi-truck w/ flatbed |

| Z O N E | CO-OP | EQUIPMENT STORAGE LOCATION | CUSTODIAN | CONTACT INFORMATION | EQUIPMENT | TRANSPORT REQUIREMENTS |
|------------------|-------|----------------------------------|------------------------------------|--|--|---|
| 5 | Y | Fort McMurray | Eveready Industrial Service Corp. | Brent Bakke Emerg. 24 hr: Ph: (788) 743-0222 Cell: (780) 714-0894 Fax: (780) 791-3242 | Mini-OSCAR Mini-OSCAR Barge Workboat Airboat Boom Vane Barge | ¾ ton truck (ball hitch) Semi-truck w/ flatbed ¾ ton truck (ball hitch) ¾ ton truck (ball hitch) ½ ton truck (ball hitch) |
| | | Conkin | Eveready Industrial Service Corp. | Brent Bakke Emerg. 24 hr: Ph: (780) 734-0222 Cell: (780) 714-0894 Fax: (780) 791-3242 | Mini-OSCAR | Semi-truck w/ flatbed |
| | VR-1 | Lloydminster | GLM Oilfield Maintenance | Greg Mainville 24 hr: (780) 808-5522 | OSCAR Workboat (2) Drum skimmer Winter OSCAR | Semi-truck ½ ton truck (ball hitch) ¾ ton truck (ball hitch) |
| | | Bonnyville | GLM Oilfield Maintenance | Greg Mainville 24 hr: (780) 808-5522 | OSCAR Workboat | Semi-truck ½ ton truck (ball hitch) |
| 6 | C | Fort St. John | Eveready Industrial Service Corp. | Jamie Wilson Ph: (888) 698-5565 Fax: (250) 785-4571 | OSCAR Barge Workboat | Semi-truck ¾ ton truck (ball hitch) ½ ton truck (ball hitch) |
| | | Fort Nelson | Eveready Industrial Service Corp. | Jamie Wilson Ph: (888) 698-5565 Fax: (250) 785-4571 | Mini-OSCAR Workboat | Semi-truck w/ flatbed ½ ton truck |
| | A | Rainbow Lake | Husky Oil Operations Ltd. | James Barnhill Ph: (780) 956-8052 Fax: (780) 956-8088 Cell: (780) 956-1814 | OSCAR Workboat | Semi-truck ½ ton truck (ball hitch) |
| | | Zama | Muzzy's Contracting | Gary Muzichuk Ph: (780) 841-8656 Cell (780) 841-8656 Emerg 24 hr: (780)-683-8011 | Mini-OSCAR | Semi-truck w/ flatbed |
| | T | Grande Prairie | Eveready Industrial Services Corp. | Wayne MacLennan Ph: (780) 532-4331 Fax: (780) 532-4405 | OSCAR Winter OSCAR Workboat (2) Airboat Drum Skimmer | Semi-truck ¾ ton truck (ball hitch) ¾ ton truck (ball hitch) |
| | | Manning | Gary Kamieniecki Contracting Ltd. | Gary Kamieniecki Ph: (780) 836-3639 | Mini-OSCAR | Semi-truck w/ flatbed |
| | E | Valleyview | Suncor Inc. | Lawrence Moro Ph: (780) 524-7002 Fax: (780) 524-3100 Cell: (780) 814-0942 | Mini-OSCAR | (2) Semi-truck w/ flatbed |
| | | Snipe Lake | Apache Canada Corporation | Blaine McNallie Ph: (780) 523-5637 Cell: (780) 552-3253 | Mini-OSCAR | Semi-truck w/ flatbed |
| | | Fox Creek | Prime West Energy | Kelly Schnell Ph: (780) 622-3112 Cell: (780) 622-9154 | Mini-OSCAR | Semi-truck w/ flatbed |
| | | Edson | Encana | Brian Stuve - Encana Ph: (780) 723-6088 Cell: (780) 728-9317 Brian McDonald – Flint Ph: (780) 723-3678 | Mini-OSCAR | Semi-truck w/ flatbed |
| | | Goose River | ConocoPhillips Canada | Gilbert Bradley Ph: (780) 524-2331 24 hr: (780) 524-4447 Fax: (780) 524-2667 Cell: (780) 524-8415 | Mini-OSCAR | Semi-truck w/ flatbed |
| | | Wildhay River | Encana | Russ Bailey Ph: (780) 827-3001 ext. 202 Cell: (780) 728-9373 | Mini-OSCAR | Semi-truck w/ flatbed |

WCSS EQUIPMENT ACCESS

EQUIPMENT

The following charges are applicable to WCSS members for the use of the equipment.

- custodian fee for transporting the unit;
- custodian fee for manpower utilized in conjunction with equipment usage (*i.e.*: unit management, boat operation);
- custodian fee for cleaning and servicing the equipment following usage;
- custodian fee to conduct an inventory following usage of the unit;
- replacement cost for consumables (*i.e.*: sorbents);
- repairs or equipment replacement as a result of damage during usage.

A company representative at the spill site or staging area will be required to sign the WCSS Equipment Use Agreement (*at the back of this section*) that transfers responsibility for the equipment to the company.

Companies that are not members of Western Canadian Spill Services Ltd. will be charged a per diem user fee (*fee is subject to change*). Non-members must also sign a Non-Member Equipment Use Agreement (*at the back of this section*).

Contact the appropriate WCSS custodian to utilize the equipment (*refer to the table beginning on page 2.4-9*).

Provide the custodian with the following information:

- | | |
|---|---|
| <input type="checkbox"/> your name | <input type="checkbox"/> specific equipment requirements |
| <input type="checkbox"/> company | <input type="checkbox"/> manpower requirements |
| <input type="checkbox"/> telephone number | <input type="checkbox"/> spill location |
| <input type="checkbox"/> fax number | <input type="checkbox"/> meeting area or equipment staging location |
| <input type="checkbox"/> cellular number | <input type="checkbox"/> safety concerns |
| <input type="checkbox"/> other relevant information | |

Request following from custodian:

- name and cellular number of transport unit
- name and cellular number of personnel accompanying unit
- custodian head office contact name and number

WCSS SPILL COOPERATIVES - MANDATE

Cooperative Area Administration

Prepare and manage geographic area budget, disseminate appropriate information to membership, assist with the tracking of members, coordinate administrative issues.

Equipment

Maintain oil spill initial response equipment on behalf of area members.

Contingency Planning

Assist area members with specific questions related to access to the WCSS website for manual updates.

Training

Coordinate annual training exercises for members and prepare appropriate exercise reports.

Spill Response

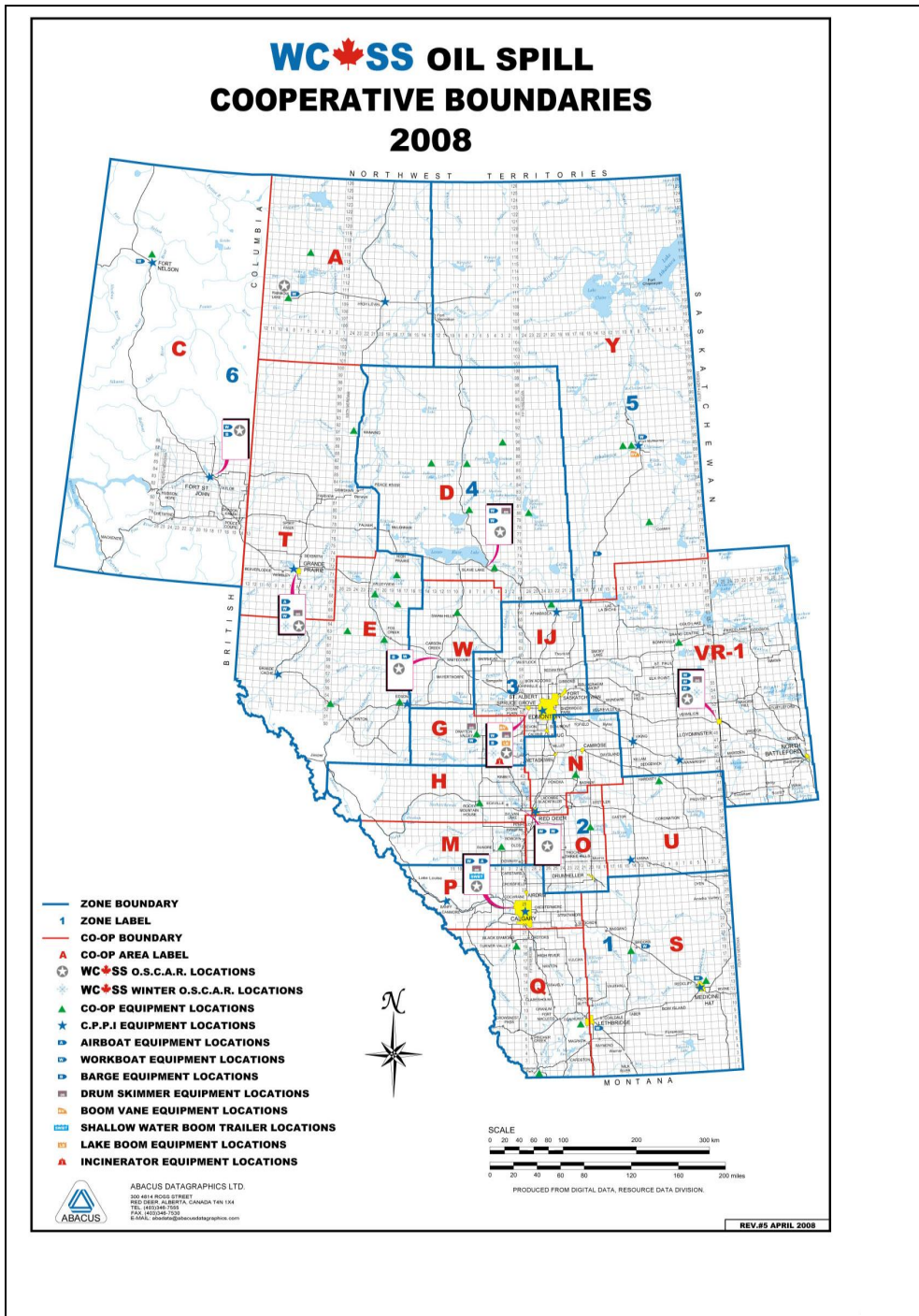
Cooperative members will assist companies with initial spill control when appropriate (*i.e.*: company responsible for spill assumes liability, cooperative response is authorized by Cooperative Chairman or representative).

Spill Response (Spills of Unknown Origin)

Cooperative members will assist regulatory agencies with the initial containment and control of a spill of unknown origin when appropriate (*i.e.*: request for action from regulatory agency representative is directed to the Cooperative Chairman or designated representative. Spill response activities are restricted to initial containment and control only).

MAP OF PROVINCIAL COOPERATIVE BOUNDARIES

- Identify area of interest.
- Refer to the following map that outlines Cooperative geographic areas.
- Contact WCSS as necessary Box 503, 3545 - 32 Avenue N.E., Calgary, Alberta T1Y 6M6
Telephone: (403) 250-9606 Facsimile: (403) 291-9408 E-Mail: info@wcss.ab.ca



WESTERN CANADIAN SPILL SERVICES LTD. CHAIRMEN, ALTERNATE CHAIRMEN & ADMINISTRATORS

Refer to specific area of interest.

The following information is listed:

- WCSS Contacts
- Provincial Cooperative Chairmen
- Cooperative Chairmen
- Cooperative Alternate Chairmen
- Cooperative Administrators

Please refer to our website www.wcss.ab.ca for up-to-date information.

| | | |
|-----------------------------------|--|---|
| WCSS Managing Director | Alan B. McFadyen WCSS c/o Enform 1538 25 Avenue NE Calgary, AB T2E 8Y3 | Ph: (403) 250-0882 Fax: (403) 291-9408 Cell: (403) 860-8985 amcfadyen@enform.ca |
| WCSS Oil Spill Coordinator | Michael Locke WCSS c/o Enform 1020 - 20 Avenue Nisku, AB T9E 7Z6 | Ph: (780) 955-6008 Fax: (780) 955-2454 Cell: (780) 288-4114 mlocke@enform.ca |
| Alberta Provincial Co-op Chairman | Les Swelin Pembina Pipelines Corporation Box 417 Sundre, AB T0M 1X0 | Ph: (403) 638-3852 Fax: (403) 638-3488 Cell: (403) 638-6020 lswelin@pembina.com |

CHAIRMEN AND ALTERNATE CHAIRMEN

| | | |
|--|--|---|
| Area A Chairman (Zama-Virgo) | Peter Morrison Imperial Oil/Exxon Mobil | Ph: (780) 956-8508 Cell: (780) 956-4115 Fax: (780) 956-3350 peter.g.morrison@esso.ca |
| Area A Alternate Chairman | James Barnhill Husky Energy | Ph: (780) 956-8052 Cell: (780) 956-1814 Fax: (780) 956-8088 james.barnhill@huskyenergy.com |
| Area C Chairman (Northeast BC) | Dave Baker Devon Canada Corporation | Ph: (250) 787-0346 Cell: (250) 793-2787 Fax: (250) 787-1450 dave.baker@devoncanada.com |
| Area C Alternate Chairman (Northeast BC) | Don Brown Petro Canada | Ph: (250) 774-4462 Fax: (250) 774-4463 donbrown@petro-canada.ca |

CHAIRMEN AND ALTERNATE CHAIRMEN

| | | |
|--|---|---|
| Area D Chairman | Chris Labrie Plains Midstream Canada | Ph: (780) 850-6002 Fax: (780) 805-6004 Cell: (780) 805-5480 clabrie@pmclp.com |
| Area D Alternate Chairman | Douglas Boisvert Husky Energy" | Ph: (780) 849-4708 Fax: (780) 849-5500 Cell: (780) 805-0571 Douglas.boisvert@huskyenergy.ca |
| Area E Chairman (Smoky River Basin) | "PENDING" | Ph: Fax: Cell: (|
| Area E Alternate Chairman | Lawrence Moro Suncor Energy | Ph: (780) 524-7002 Fax: (780) 524-3509 Cell: (780) 814-0942 lmoro@suncor.com |
| Area G Chairman (Pembina) | Trent Myck Imperial Oil Resources Ltd. | Ph: (780) 894-7320 Cell: (780) 621-6902 Fax: (780) 894-7373 trent.e.myck@esso.ca |
| Area G Alternate Chairman | Darren Stang High Pine Oil & Gas Limited | Ph: (780) 621-3383 Fax: (780) 621-3936 Cell: (780) 202-0943 dstang@highpineog.com |
| Area H Chairman (Red Deer - Rocky Mountain House) | Dave Clough Suncor Energy Inc. | Ph: (403) 844-5005 Fax: (403) 845-2195 Cell: (403) 844-7433 dclough@suncor.com |
| Area H Alternate Chairman | Ron Matchett TransCanada | Ph: (403) 845-1202 Cell: (403) 846-1471 Fax: (403) 845-1218 ron_matchett@transcanada.com |
| Area IJ Chairman (Redwater/Devon) | Paul Tetreau Pembina Pipelines | Ph: (780) 467-6464 ext. 636 Fax: (780) 467-1083 Cell: (780) 991-5567 ptetreau@pembina.com |
| Area IJ Alternate Chairman | Trent Burgardt Enbridge Pipelines | Ph: (780) 449-2678 Fax: (780) 449-2463 Cell: (780) 203-9043 trent.burgardt@enbridge.com |

CHAIRMEN AND ALTERNATE CHAIRMEN

| | | |
|---|---|--|
| Area M Chairman (Harmattan-Innisfail) | Les Swelin Pembina Pipelines Corporation | Ph: (403) 638-3852 Fax: (403) 638-3488 Cell: (403) 638-6020 Pager: (403) 661-0737 lswelin@pembina.com |
| Area M Alternate Chairman | Stephen Michalsky Bonavista Petroleum | Ph: (403) 638-3208 Fax: (403) 638-3216 Cell: (403) 636-1090 stephen.michalsky@bonavistaenergy.com |
| Area N Chairman (Joarcam-Clive-Joffre-Bonnie Glen) | Marvin St. Louis Apache Canada Corp. | Ph: (780) 877-3784 Fax: (403) 877-3794 Cell: (403) 740-6095 marvin.stlouis@apachecorp.com |
| Area N Alternate Chairman | Geoff Savill Imperial Oil Resources Ltd. | Ph: (780) 389-7166 Pager: (780) 671-2795 Fax: (780) 389-7102 Cell: (780) 940-3534 geoffrey.g.savill@esso.ca |
| Area O Chairman (Stettler-Wimborne) | Larry Marshall Encana Corporation | Ph: (403) 485-2066 Fax: (403) 823-1060 Cell: (403) 934-7349 larry.marshall@encana.com |
| Area O Alternate Chairman | Duane Bolin Encana Corporation | Ph: (403) 823-1011 Fax: (403) 823-1060 Cell: (403) 823-0532 Pager: (403) 820-3400 duane.bolin@encana.com |
| Area P Chairman (Calgary) | S. Ken Chalmers TAQA North Ltd. | Ph: (403) 669-7451 Fax: (403) 845-4738 Cell: (403) 861-3645 skenc@primewestenergy.com |
| Area P Alternate Chairman | Larry Marshall Encana Corporation | Ph: (403) 485-2066 Fax: (403) 823-1060 Cell: (403) 934-7349 larry.marshall@encana.com |
| Area Q Chairman (Turner Valley) | Lyle D. Witt ConocoPhillips Canada | Ph: (403) 485-5296 Fax: (403) 485-2053 Cell: (403) 485-8742 lyle.d.witt@conocophillips.com |
| Area Q Alternate Chairman | Dan Janicki Talisman Energy | Ph: (403) 558-3757 ext. 245 Fax: (403) 558-3985 Cell: (403) 312-3617 djanicki@talisman-energy.com |

CHAIRMEN AND ALTERNATE CHAIRMEN

| | | |
|--|--|---|
| Area VR-1 Chairman (Lakeland-Lloydminster) | Cam Steward Plains Midstream Canada | Ph: (780) 573-7350 Fax: (780) 543-7352 Cell: (780) 812-0374 cam.steward@plainsmidstream.com |
| Area VR-1 Alternate Chairman | Ryan Wartman Baytex Energy Ltd. | Ph: (780) 875-2092 Fax: (306) 387-6210 Cell: (780) 205-7107 ryan.wartman@baytex.ab.ca |
| Area S Chairman (Southeast Alberta) | Lorne Schmidt Enerplus Resources Fund | Ph: (403) 377-2631 ext. 26 Fax: (403) 377-2635 Cell: (403) 501-8673 lschmidt@enerplus.com |
| Area S Alternate Chairman (Southeast Alberta) | Adam Szoke Husky Energy | Ph: (403) 544-3317 Fax: (403) 544-3003 Cell: (403) 952-9760 adam.szoke@huskyenergy.ca |
| Area T Chairman (Grande Prairie) | Bill Nalder Canadian Natural Resources Ltd. | Ph: (780) 831-7466 Fax: (780) 538-9394 Cell: (780) 518-5457 bill.nalder@cnrl.com |
| Area T Alternate Chairman (Grande Prairie) | Allan Alstad Conocophillips Canada | Ph: (780) 766-4009 Fax: (780) 766-2900 Cell: (780) 876-5303 allan.j.alstad@conocophillips.com |
| Area U Chairman (Coronation) | Jamie Mowbray Enbridge Pipelines Inc. | Ph: (780) 888-8352 Fax: (780) 888-2397 Cell: (780) 888-5259 jamie.mowbray@enbridge.com |
| Area U Alternate Chairman | Todd Baumgartner CCS Midstream Services | Ph: (780) 888-3565 Cell: (780) 888-1408 Fax: (780) 888-3978 tbaumgartner@ccsmidstreamservices.com |
| Area W Chairman (Whitecourt) | Tim McTaggart Devon Canada | Ph: (780) 333-7809 Fax: (780) 333-7840 Cell: (780) 333-5028 tim.mctaggart@dnv.com |
| Area W Alternate Chairman | VACANT | |
| Area Y Chairman (Fort McMurray) | Teddy Bowers Enbridge Pipelines (NW) Inc | Ph: (780) 788-2051 Ph: (780) 715-1769 Fax: (780) 714-5550 Cell: (780) 598-0827 teddy.bowers@enbridge.com |
| Area Y Alternate Chairman | Al McCutcheon InterPipeline Fund | Ph: (780) 714-5461 Fax: (780) 743-1678 Cell: (780) 881-2050 amccutcheon@interpipelinefund.com |

ADMINISTRATORS

| | | |
|---|---|--|
| Administrator - Area VR-1 | Audrey Campbell Admin Advantage Box 6023 Bonnyville, AB T9N 2G7 | Ph: (780) 826-4146 Fax: (780) 826-2676 Cell: (780) 812-5245 rcampbel@telusplanet.net |
| Administrator - Area U | Chris Harrison Enbridge Pipelines Inc. Hardisty Terminal | Ph: (780) 888-3521 Ext. 5 Fax: (780) 888-2397 Cell: (780) 888-1324 chris.harrison@enbridge.com |
| Administrator - Area T - Area E - Area C | Gail O'Neill 9611 105 Avenue Fort St. John, BC V1J 2L9 | Ph: (250) 785-3676 Fax: (250) 785-9194 Cell: (250) 261-9163 gails@pris.bc.ca |
| Administrator - Area P - Area Q - Area S - Area M - Area H - Area N - Area O - Area I/J - Area Y - Area A | Jackie Marchbank Sageland Resources Box 1133 Rocky Mountain House, AB T4T 1A8 | Ph: (403) 845-6961 Fax: (403) 845-6961 Cell: (403) 845-0054 sageland@telusplanet.net |
| Administrator - Area D | Krista Hunt Slave Safety Supply Box 1458 Slave Lake, AB T0G 2A0 | Ph: (780) 849-4214 Cell: (780) 805-0541 huntlowe@telusplanet.net |
| Administrator - Area W | Sharon Veroba R&S Veroba Oilfield Services Ltd. Box 674 Swan Hills, AB T0G 2C0 | Ph: (780) 333-2194 Cell: (780) 333-1599 Fax: (780) 333-3071 Sharon.veroba@dvn.com |
| Administrator - Area G | Dione Bailey Zargon Oil & Gas | Ph: (780) 542-3585 Cell: (780) 515-1888 dioneb@explornet.com |

CPPI OIL SPILL EQUIPMENT PACKAGES

| BRITISH COLUMBIA | | | | | |
|----------------------------|--------------|---------------------------------------|---|---|--|
| LOCATION | PACKAGE TYPE | CUSTODIAN | CONTACT | DAY NUMBER | NIGHT NUMBER |
| Burns Lake | Basic | Lyle Sande Agencies (Chevron) | Lyle Sande Kristi McCrindle | 250-692-3511 | 250-692-5721(KM) |
| Campbell River | Basic | K&S Petroleum Ltd. (Chevron) | Kerry Coulson | 250-286-1136 | 604-923-1576 (DF) |
| Castlegar | Basic | Fire Department | Chief Gerry Rempel & Ast Chief Tony Cooper | 250-365-3355 250-365-3266 (GR) | 250-365-3355 (emerg.) |
| Cranbrook | Basic | Jepson Petroleum Ltd (Petro-Canada) | Mgr. Chris Jepson & Dave Schmideder | 250-426-6669 | 250-426-2551 |
| Creston | Basic | R A Glennon Petroleum (Shell) | Robert Smith Randy Glennon Stacey Ostendorf | 250-428-7131 | 250-428-455 (RS) 250-866-5782(SO) |
| Ft. Nelson | Basic | Fire Department | Chief Dennis Muise Asst. Chief James Childs | 250-774-3955 | 250-774-3955 (24 hr. emerg.) |
| Ft. St. John | Basic | Fire Department | Dep Chief Fred Burrows Chief Jeff Lambert Doreen Holmes | 250-785-4333 | 250-261-6417 (emerg.) |
| Golden | Basic | Fire Department | Chief Shawn Tomash | 250-344-6401 | 250-832-3132 250-344-8264 (MF cell) |
| Kamloops | Basic | Petro-Canada Terminal | Stephen Demianiuk Rick Geier | 250-376-3334 | 250-376-3334 (answer service) |
| Kelowna | Basic | Fire Department | Eileen Davies | 250-860-6419 | 250-860-6419 |
| Nanaimo | Basic | Nanaimo Fire Rescue | Deputy Chief Bob Simpson | 250-755-4556 | 250-755-4556 |
| Prince George | Basic | Husky Energy Refinery | Greg Primus Bill Fraser | 250-960-2500 250-960-2523 (BF) | 250-960-2500 (switchboard) |
| Revelstoke | Basic | Big Eddy Fuel (Shell) | Peter Humphries | 250-837-3214 | 250-837-5223 (PH res.) |
| Surrey (Cloverdale) | Basic | D.W.P. Distributors Limited (Chevron) | Bill Poppy | 604-576-2961 | 604-856-7879 (BP) |
| Terrace | Basic | Fire Department | Chief Peter Weeber | 250-638-4734 (24hr) 250-638-4742 PW | 250-635-1358 (BN res.) 250-615-6846 (BN cell) 250-638-7203 (M res.) 250-615-6845 (M cell) |
| Valemount | Basic | Fire Department | Chief Rick LaLonde, Hugh Miller, Dep. & Donovan Gee, Dep. | 250-566-9800 (Village Office) 250-566-9131 | 250-566-9847 (RL res.) 250-566-4855 (HM res.) 250-566-4590 (DG res.) |
| Williams Lake | Basic | TaGerra Holdings Ltd. (Chevron) | Tammi Caferra Linda Dudoski | 250-392-4224 | 250-398-5463 250-305-8673 (cell-TC) 250-398-7401 (LD) |

CPPI OIL SPILL EQUIPMENT PACKAGES *(CONTINUED)*

| ALBERTA | | | | | |
|-----------------------|---|--|---|--|---|
| LOCATION | PACKAGE TYPE | CUSTODIAN | CONTACT | DAY NUMBER | NIGHT NUMBER |
| Athabasca | Basic | Volunteer Fire Dept. (Town) | Fire Chief Denis Mathieu | 780-675-2200 (emerg.) 780-675-2569 (fire hall) 403-760-5955 (on duty cell) | 780-675-2200 (emerg.) 780-689-9024 (DM cell) |
| Banff | Basic | Fire Department | Deputy Jim Watt | 403-762-1250 (JW) | 911 (fire dept.) |
| Calgary | Basic | ECL Transportation | Bruce Thompson & Gail Sharko | 403-720-1000 | 403-720-1000 |
| Edmonton | Basic | ECL Transportation | Randy Johnston & Gail Sharko (Calgary) | 780-464-3200 | 780-464-3200 |
| Edson | Basic | Fire Department | Chief Allan Schram | 780-723-3178 780-723-4401 (AS) | 780-723-3137 (emerg.) |
| Ft. McMurray | Basic | Eveready Industrial (TriVax Enterprises) | Brent Bakke | 780-743-0222 780-598-3427 (BB) | 780-743-0222 780-598-3427 (BB) |
| Grande Prairie | Basic | Fire Department (cheque NOT to City) | Deputy Chief Harvey Pearson & Dennis Driver, Stn. Captain | 780-538-0393 780-538-0381(DM) | 780-538-0393 (fire dept.) |
| Hanna | Basic | Volunteer Fire Dept. | Chief David Mohl | 403-854-4433 (town) | 403-854-9090 (fire dept.) |
| High Level | Basic | Fire Department | Chief Rod Schmidt | 780-926-3141 (24 hrs.) 780-926-3192 | 780 926-3141 (24 hr. emerg.) |
| Lethbridge | WCSS Equip. Muskrat | Mid-West Pump (90) Ltd. | Gerry Colburn Ed Carpenter | 403-329-0427 (24 hrs.) | 403-329-0427 (24 hrs.) |
| Medicine Hat | Basic | Fire Department | Chief Garry Mauch Deputy Allan Guest Randy Stotz | 403-529-8282 | 403-529-8282 |
| Rainbow Lake | WCSS Equip. OSCAR | Husky Oil Processing Plant | Monty Moore | 780-956-8010 (24 hrs) 780-956-8024 | 780-956-8010 (24 hrs) |
| Red Deer | WCSS Equip. OSCAR, Muskrat, Work Boat | Key Safety & Blowout Control | Rob Graefer | 866-347-3911 (24 hrs) | 888-347-3911 (24 hrs.) |
| Slave Lake | WCSS Equip. OSCAR, 2 Muskrats, Drum Skimmer | Slave Lake Specialties | Ben Dautel | 780-849-3863 (24 hrs.) | 780-849-3863 (24 hrs.) 780-849-1462 (cell) |
| Viking | Basic | Fire Department | Chief Ken Ruzicka | 780-336-5406 (cell) | 780-336-5406 (24 hrs. - cell) |

CPPI OIL SPILL EQUIPMENT PACKAGES (CONTINUED)

| YUKON / NWT | | | | | |
|--------------------|---------------------|---|-----------------------------|------------------------------|-------------------------------|
| LOCATION | PACKAGE TYPE | CUSTODIAN | CONTACT | DAY NUMBER | NIGHT NUMBER |
| Hay River | Basic | Matonabee Petroleum Ltd. (Petro-Canada) | Bill Wright | 867-874-2215 867-874-2594 | 867-874-2215 (emerg.) |
| Yellowknife | Basic | Matonabee Petroleum Ltd. (Petro-Canada) | Shawn Delaney Dalyn Chan | 867-873-4001 | 867-873-4001 |
| Whitehorse | Basic | R. Mitchell Petroleum (Petro-Canada) | Bob Mitchell & Mike Baldwin | 867-667-6431 | 867-667-6431 (answer service) |

| SASKATCHEWAN | | | | | |
|-------------------------|---------------------|---------------------------------------|---|--|---|
| LOCATION | PACKAGE TYPE | CUSTODIAN | CONTACT | DAY NUMBER | NIGHT NUMBER |
| La Ronge | Basic | Fire Department | Chief Ron Pratt | 306-425-3230 | 306-425-3111 (emerg.) |
| North Battleford | Basic | Fire Department | Chief Mike Saunders Deputy Bryan Beach | 306-445-1770 306-445-1779 (MS) 306-445-1778 (BB) | 306-445-1770 (24 hr phone) |
| Prince Albert | Basic | North-Sask Ag Services (Esso) | Kelly Bartel & Curtis Parent | 306-764-4228 | 306-763-1773 (KB) 306-922-2761 (GB) |
| Regina | Basic | Envirotec Services Inc. | Lyle Clouatre (Daniel Guskjolen looks after trailer - 99 Andre Ave, Regina S4T 7N1) | 1-877-244-9500 (24 hr.) 306-721-9500 (SB) | 1-877-244-9500 (24 hr.) 306-533-0336 (DG cell) |
| Saskatoon | Basic | Fire Department | Chief Gary Kobussen (Admin Office) Jim Wood (AO) Captain Jerry Unser looks after trailer. | 306-975-2520 | 306-975-2528 GK 306-220-2776 JW 306-975-2520 JU |
| Swift Current | Basic | Fire Department | Chief Bob Rindahl Cathy Werbowetsky | 306-778-2760 306-778-2795 BR 306-778-2760 CW | 306-778-2761BR |
| Weyburn | Basic | Fire Department | Chief Denis Pilon & Asst Murray Sabados | 306-848-3240 | 306-848-3240 |
| Yorkton | Basic | Brendonn Holdings Ltd. (Petro-Canada) | Tony Ripa & R Kuschak | 306-783-4567 | 306-783-2396 |

CPPI OIL SPILL EQUIPMENT PACKAGES (CONTINUED)

| MANITOBA | | | | | |
|-----------------------|---|---------------------------------------|--|-----------------------------------|--|
| LOCATION | PACKAGE TYPE | CUSTODIAN | CONTACT | DAY NUMBER | NIGHT NUMBER |
| Brandon | Basic | Fire Department | A/Lt. Donald Matthews | 204-729-2420 204-729-2400(DM) | 204-729-2400 |
| Dauphin | Basic | Brendonn Holdings Ltd. (Petro-Canada) | Mike Gawaziuk | 204-638-4401 | 204-672-0093 (MG cell) |
| Flin Flon | Basic | OUT OF SERVICE 09/05 (Fire Dept) | Chief Jim Petrie | 204-687-3100 204-681-7535 | 204-687-3100 (emerg.) |
| Swan River | Basic | J Sutherland Fuels Ltd. (Shell) | Jim Sutherland or Earl | 204-734-4525 | 204-236-4480 (JS res.) 204-734-0501 (JS cell) 204-734-8276 (cell after hrs.) |
| The Pas (Town) | Basic | Fire Department | Deputy Chief Richard Paetzold Chief Ron Bourquin | 204-627-1122 204-627-1121 (RP) | 204-623-3100 (emerg.) 204-623-0585 (cell) 204-623-0720 (RP) |
| Thompson | Basic | Doak's Fuel Service (Esso) | Rob Bilawka | 204-677-2150 | 204-677-2150 |
| Winnipeg | Basic <u>WCSS Equip.</u> OSCAR, 2 Jet Boats | Euroway Industrial Service Co. Ltd. | Gary Mittermayr | 204-661-0500 | 204-661-0500 |

(*) - managed by Western Canadian Spill Services Ltd. (WCSS) (includes PVC boom, boat, etc.)
 BASIC - denotes package standard adopted by CPPI - Western Division
 (NT) - indicates no equipment trailer

WCSS POLICY – SPILL RESPONSE FOR UPSTREAM PETROLEUM PRODUCTS

The following are two situations where WCSS Oil Spill Cooperative volunteers may be involved in the response to spills:

- Spills of Unknown Origin - Cooperative volunteers respond to a spill (upstream petroleum products) at the request and under the direction of the lead regulatory agency (see attached policy document).
- Membership Request - Cooperative volunteers (key response team) provide initial containment and recovery assistance to WCSS members in good standing for surface water spills and/or land based spills where there is a potential adverse impact on surface water. The company responsible for the spill will:
 - assume the role of the incident commander;
 - assume full responsibility for the spill and sign the WCSS waiver form (attached) as soon as possible;
 - replace WCSS volunteers with company personnel and/or spill contractors within the first 8 hour time period of the response;
 - hold WCSS and WCSS volunteers harmless for all actions taken during the spill response.

WCSS POLICY - SPILL RESPONSE FOR REFINED PETROLEUM PRODUCTS

WCSS is the upstream industry's spill preparedness organization and recognizes that there are limitations related to the organizations response capability for refined product spills. There may be specific spill situations where WCSS can assist the responsible company by providing advice, equipment and manpower. The decision to assist with a refined product spill is at the WCSS oilspill cooperative level. WCSS policy related to refined product spill response is attached for guidance and information.

WCSS POLICY – APPROPRIATE USE OF WCSS EQUIPMENT AND BOATS

WCSS spill response equipment (Regional Equipment and Co-op Equipment) should only be used for containment and recovery operations on actual spill clean-ups, or training exercises / courses. Members in good standing of WCSS needing a spill response unit are encouraged to sign out the complete trailer or skid mounted unit, and if unfamiliar with the equipment unit and its contents request the assistance of a WCSS equipment custodian or alternative WCSS representative (i.e. WCSS Oil Spill Coordinator). The member in good standing must sign out the equipment with the custodian, which involves signing an Equipment Use Agreement which transfers responsibility for the equipment to the member. If boats are needed they must also be signed out and an Equipment Use Agreement signed.

WCSS continues to encourage those individuals that have been certified by Enform as Boat Operators, to use the boats to help maintain their skills. This practice is acceptable as long as the boats are being used in an appropriate business-like manner and the individuals sign out the boats properly with the custodian. Verifying existing control points or scouting new ones is also an acceptable use of the boats as long as proper sign out procedures are followed and the boats are operated in an appropriate manner. It is expected that under normal circumstances, maintaining skills and control point work would be conducted during normal business hours. All of the boats have WCSS decals and are easily identifiable to members of the public and industry.

- The boats must not be used for recreational purposes either during or after normal business hours (i.e. NO FISHING, NO SIGHT SEEING TOURS).
- There must not be any alcoholic beverages transported or consumed on the boats at any time.
- Life jackets or PFD's must be worn by all personnel on board the boats at all times.

Occasionally the boats have been used for community service or have been requested for use in search and rescue operations. WCSS Management (Al McFadyen, Managing Director; and Michael Locke, WCSS Oil Spill Coordinator) must be notified and approval given on a case by case basis for these kinds of activities.

Note: Each boat has a log book. Use the log book to document equipment use and problems. Replace lost items, and repair broken equipment. If you are not capable or conducting repairs or replacing equipment, notify the custodian of the problem and make arrangements for repairs or replacement. Leave the equipment in better condition than you found it.

WESTERN CANADIAN SPILL SERVICES LTD. SPILLS OF UNKNOWN ORIGIN GUIDELINE

WCSS ROLE

Western Canadian Spill Services Ltd. (WCSS) will assist the lead regulatory agency in the containment and control of spills on a case-by-case basis (at the discretion of the Cooperative Chair, Alternate Chair or representative of the area cooperative (*i.e.*: Steering Committee member)).

In this document, “assisting the lead regulatory agency” is important in that it recognizes that although WCSS is not legally obligated to respond to these types of spills, the organization is prepared to help when it is appropriate. It also emphasizes that the role of WCSS is to assist with the spill response under the direction of the lead regulatory agency.

Containment and control of spills of unknown origin for the purpose of this document refers to the following:

- ▶ develop a safe incident approach plan with safety as the highest priority;
- ▶ sampling and analysis of the spill material to identify the substance;
- ▶ develop a containment plan and take steps to prevent the spilled material from migrating from the site;
- ▶ collection and appropriate disposal of free fluids from the site;
- ▶ removal and disposal of contaminated material at an approved waste facility if in-situ treatment is not an option.

SPILL REPORTING/INITIAL RESPONSE

In the event that the spill is discovered by a WCSS member company, the member company representative will:

- ▶ report the spill to their spill cooperative contact;
- ▶ if safe to do so, secure the site and under advice from the cooperative and lead regulatory agency representatives, prevent the spill from migrating off the site;
- ▶ make note of any evidence at the spill site that will assist the government inspector in identifying the responsible party.

Following the report of a spill of unknown origin, the cooperative representative will:

- ▶ report the spill to the appropriate regulatory agency and request a site visit and direction in terms of what the agency’s expectations are (*agreements should be followed up in writing*);
- ▶ document the key points of the incident (*utilize forms in section 2 and 8 of WCSS Generic Manual or equivalent*);
- ▶ dispatch a cooperative representative to the site with appropriate contractors to initiate containment and control activities;
- ▶ notify the WCSS Managing Director (*Alan McFadyen at (403) 250-0882*).

Note: When possible, no work should be done at the site without direction from the lead regulatory agency.

SAMPLING AND ANALYSIS

If appropriate (*inspector request*), samples may be gathered at the spill site and forwarded to a commercial laboratory for analysis. The objective of the analysis should be to identify the material so that a safe, effective response can be undertaken. The analysis could also be used to fingerprint the source of the spill. When possible, the inspector should assist with the sampling process.

USE OF CONTRACTORS

A cooperative representative should work closely with the government inspector to determine the spill response plan. If contractors are utilized to contain and control the spill, they should be under the direction of the cooperative representative.

The cooperative would advise the WCSS Managing Director or their Executive Sub-Committee representative if the spill of unknown origin:

- ▶ creates public interest
- ▶ is non-routine
- ▶ has high costs associated with the response.

DISPOSAL OF OIL DEBRIS/CONTAMINATED MATERIAL

The preferred response option is to treat the material on site and if free fluids are removed, transport them to an approved waste facility.

For small spills where the contaminated material must be removed, the cooperative, in consultation with the inspector, has the authority to utilize an approved waste facility. If the disposal costs exceed \$5,000.00, the co-op must notify the WCSS Managing Director or their Executive Sub-Committee member.

PAYMENT FOR SPILL RESPONSE ACTIVITIES

All invoices related to the spill response should be attached to a spill report form that includes the following information:

- ▶ date the spill was discovered (*reported*)
- ▶ location of spill
- ▶ government agency/inspector name/contact number
- ▶ brief outline of the request
- ▶ material spilled
- ▶ spill response outline
- ▶ breakdown of costs

The invoices and spill report can be forwarded for payment to:

Western Canadian Spill Services Ltd.
Box 503, 3545 - 32 Avenue NE
Calgary, AB T1Y 6M6
Attention: Alan B. McFadyen

SPILL RESPONSE AGREEMENT

This is to advise that:

the operating company / regulatory agency _____
(name of company or agency)

agrees to hold representatives of Western Canadian Spill Services Ltd. ("WCSS") harmless for spill response performed on behalf of:

the operating company / regulatory agency _____
(name of company or agency)

Furthermore, this is also to advise that:

the operating company / regulatory agency _____
(name of company or agency)

agrees that WCSS representatives are additionally insured by:

the operating company / regulatory agency _____
(name of insurer for company or agency)

with respect to operations performed on behalf of:

the operating company / regulatory agency _____
(name of company or agency)

**COMPANY / REGULATORY
AGENCY REPRESENTATIVE**

WCSS REPRESENTATIVE

Print Name

Print Name

Signature

Signature

Location

Date

Date



WCSS Managing Director
Fax: (403) 291-9408

WESTERN CANADIAN SPILL SERVICES LTD.
**REFINED PRODUCT SPILL RESPONSE
GUIDELINE**

RESPONSIBILITIES

The legal responsibility for a refined product spill response lies with the owner and transporter of the product released. WCSS members who handle refined products should ensure that they have access to trained personnel and the necessary resources to respond safely and effectively to a refined product spill.

WCSS members have access to contingency plans, training and equipment that is primarily targeted for upstream product spills. It is important for members and our associates to recognize that refined product spill response preparedness requires additional planning, specialized training and that the spill response equipment requirements may call for specialized equipment that is currently not available in our Cooperative or regional response units.

RECOMMENDED SPILL RESPONSE STEPS – GUIDELINE

Although no two spills are the same and the appropriate response is based on the characteristics and hazards associated with the spilled material, the following response steps can be used as a general guideline:

- Step # 1* • Identification of the spilled substance.
- Step # 2* • Hazard assessment and implementation of safety controls (includes establishment of a continuous monitoring program and documented site safety meetings).
- Step # 3* • Security of the site and identification of areas that are restricted to authorized entry only, as well as identification of escape routes and a muster station.
- Step # 4* • Initial containment, if safe to do so.
- Step # 5* • Identification of all stakeholders impacted by the incident.
- Step # 6* • Evaluation of the impact to the land base and surrounding land uses.
- Step # 7* • Formulation of a spill response plan and activation of plans and resources.
- Step # 8* • Notification to appropriate company personnel and regulators.
- Step # 9* • Containment and recovery of the spilled substance.
- Step # 10* • Rehabilitation of the area affected by the incident.

Note: The importance of reporting the spill to the appropriate regulatory agencies in a timely fashion must not be overlooked.

REQUEST FOR COOPERATIVE ASSISTANCE IN REFINED PRODUCT SPILLS

A unified response to a refined product spill will be at the discretion of the Cooperative, with the safety of responders and the general public as our highest priority. In most cases, the role of the Cooperative will be to assist trained personnel and the lead regulatory agency in bringing the incident under control.

In the event that a WCSS member discovers the spill, his/her role will be to notify the regulators or appropriate emergency response organization, and to assist with site security, if safe to do so. No containment and recovery work should be done unless the product has been identified, a hazard assessment undertaken and the member has the appropriate training to initiate initial response.

RESOURCE LIST

Western Canadian Spill Services Ltd. (WCSS)

- ▶ Members and associates have access to Cooperative Oil Spill Contingency manuals, equipment primarily designed for hydrocarbon spills in surface water and training through annual area equipment deployment exercises. WCSS regional spill response trailers, boats, specialized equipment and trained custodians with some spill response capabilities are also available to members. Non-members have access to equipment on a rental basis.

Canadian Petroleum Products Institute (CPPI)

- ▶ Members have access to regional inland oil spill equipment packages and orientation training on an annual basis.