

**WCSS RESOURCES:
CONTACT INFORMATION,
EQUIPMENT LOCATIONS**

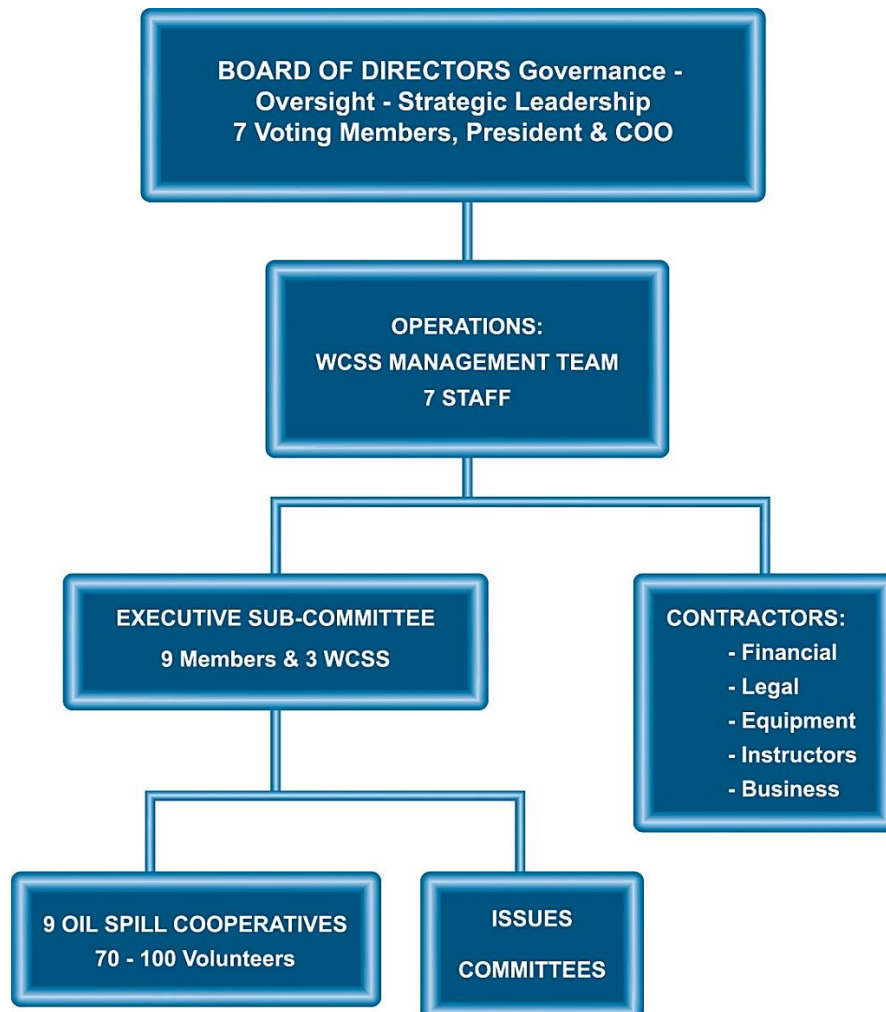
2.3

For specific information contact:

Western Canadian Spill Services Ltd. (WCSS)
Box 503, 3545 - 32 Avenue NE
Calgary, AB T1Y 6M6

24 Hour.....1-866-541-8888
Telephone..... 587-393-9620
E-Mail.....info@wcss.ab.ca

ORGANIZATIONAL STRUCTURE



Please refer to our website for the most updated version of this section for your manual. We recommend that you check for updates in each quarter, in order to maintain up to date information. The following instructions will assist you in updating section 2.3 of this manual.

1. www.wcss.ab.ca
2. Near the bottom of the Home page, under the REGULAR UPDATES heading, click Section 2.3 Contact Info

Check the footer date in your printed section 2.3. If this is a different date from what is indicated in the update link (i.e., the footer in your manual says October 20, 2021, and the date on the website says July 21, 2022), click on the link, print double-sided, and place in your manual.

REMEMBER: to ensure that your manual is always up to date, check these links every 4 months.

PREPAREDNESS
Helping ensure the petroleum industry is capable of safe, effective oil spill response.

Western Canadian Spill Services : Spill preparedness and response support since 1972.

ANNOUNCEMENTS

September 20, 2021

2022 Coop Boundary Changes

Big changes are coming in 2022 for WCSS and we are excited to share them with you! Please visit our [Maps page](#) / 2022 Cooperative Boundary Changes to learn more.

Training Access During COVID-19 Pandemic

For the remainder of 2021, member companies can ensure regulatory compliance for annual exercise attendance by completing the 2 steps listed below:

Step 1:

- **Orientation Video**

Step 2:

- Complete one of the following eLearning modules of your choosing:
 - **Small Water / Creeks**
 - **Large River**
 - **Lakes**
 - **Water Body with an Ice Sheet**

Please note: If you have not previously taken the **Spill Responder 100** online course, you will need to create a new account using your first/last name, company name, and **Coop Area** that you are representing.

Once you have completed both steps, please email amy.crenier@wcss.ab.ca. She will update the exercise attendance tracking sheet on behalf of the company(ies) that you represent.

Member companies are required to ensure adequate representation in each **Zone** where they have operations.

Please contact Amy Crenier at 403-637-0629 with any coop exercise representation inquiries.

For all other COVID-19 & Variant training inquiries, please contact info@wcss.ab.ca and your question will be directed to the correct staff member.

Equipment Access During COVID-19 Pandemic

WCSS staff have a plan in place to continue operations remotely. As per our regular maintenance program, your initial spill response equipment remains in a state of readiness and [we will ensure consistent communication](#) with our custodians to ensure success.

REGULAR UPDATES

- List of Equipment Currently in Use as of October 18, 2021
- Section 2.3 - Contact Info - updated October 20, 2021

Archived newsletters and updates to the Oil Spill Contingency Manual are available [here](#)

EQUIPMENT
LEARN MORE

TRAINING
VIEW ALL UPCOMING EVENTS AND TRAINING TOOLS

CONTINGENCY MANUAL
Click here to download, order and view price listings of area specific manuals.

VIEW GENERIC MANUAL [PDF]
VIEW PRICE LIST [PDF]

Contact information regarding Coop Area Steering Committees and Initial Response Teams is kept with your Area Chair and Administrators. Please ensure you have their contact information readily available to you at all times.

WCSS CONTACTS

President & COO	Scott Dionne Western Canadian Spill Services Ltd #280, 6815 – 8 Street NE Calgary, AB T2E 7H7	Telephone:587-393-9618 Cellular:403-807-0220 Email: Scott.Dionne@wcss.ab.ca
Operations Manager	Spencer Lofthaug Western Canadian Spill Services Ltd #101, 301 Saskatchewan Avenue Spruce Grove, AB T7X 0G6	Telephone: 587-461-8551 Cellular: 587-999-4030 Email:..... Spencer.Lofthaug@wcss.ab.ca
Equipment Coordinator	Jeff Murray Western Canadian Spill Services Ltd #101, 301 Saskatchewan Avenue Spruce Grove, AB T7X 0G6	Telephone: 587-461-8609 Cellular: 780-690-1754 Email: Jeff.Murray@wcss.ab.ca
Business Manager & Accounting	Shiela Wooldridge Western Canadian Spill Services Ltd #280, 6815 – 8 Street NE Calgary, AB T2E 7H7	Telephone: 587-393-9619 Email: Shiela.Wooldridge@wcss.ab.ca
Communications & Training Manager	Shannon Jarrell Western Canadian Spill Services Ltd #280, 6815 – 8 Street NE Calgary, AB T2E 7H7	Telephone: 587-393-9622 Cellular: 403-650-4765 Email: Shannon.Jarrell@wcss.ab.ca
Training Coordinator	Amy Grenier Western Canadian Spill Services Ltd #280, 6815 – 8 Street NE Calgary, AB T2E 7H7	Telephone:587-393-9621 Cellular:403-837-0629 Email: Amy.Grenier@wcss.ab.ca
Administrative Assistant	Leona Boisselle Western Canadian Spill Services Ltd #280, 6815 – 8 Street NE Calgary, AB T2E 7H7	Telephone: 587-393-9620 Email: Leona.Boisselle@wcss.ab.ca
Website	www.wcss.ab.ca	

WCSS EXECUTIVE SUB-COMMITTEE

Nolan Steinwand Provincial Chair	Telephone: Cellular: Email:	403-351-4051 587-215-5442 nsteinwand@petronascanada.com
Adam Szoke	Coop 2 Telephone: Cellular: Email:	403-580-8529 403-952-9760 adam.szoke@cnrl.com
Marvin St. Louis	Coop 3 Telephone: Cellular: Email:	403-788-2350 403-740-6095 mstlouis@emberresources.com
Mark Jones (Alternate Provincial Chair)	Coop 4 Telephone: Cellular: Email:	780-449-2269 780-720-2561 mark.jones@interpipeline.com
Chris Labrie	Coop 6 Telephone: Cellular: Email:	780-849-3800 Ext. 2015 780-805-5480 chris.labrie@plainsmidstream.com
Morgan Alexander	Coop 7 Telephone: Cellular: Email:	780-997-4063 780-991-0582 malexander@wolfmidstream.com
Carl Reimer	Coop 9 Telephone: Cellular: Email:	250-262-3456 250-262-8752 carl.reimer@northrivermidstream.com
Stephen Michalsky	Cellular: Email:	403-636-1090 stephen.michalsky@bonavistaenergy.com
Trent Myck	Cellular: Email:	780-621-2723 tmyck@xplornet.ca

WCSS CHAIRS & ALTERNATE CHAIRS

Please refer to our website www.wcss.ab.ca for up-to-date information

CHAIRS AND ALTERNATE CHAIRS		
Coop 1 Chair	Derren Weimer Canadian Natural Resources Ltd	Cell: 780-205-1193 derren.weimer@cnrl.com
Coop 1 Alternate Chair	Scott Nelson Plains Midstream	Ph: 306-387-6447 ext. 1 Cell: 780-808-1505 scott.nelson@plainsmidstream.com
Coop 2 Chair	Mike Peacock Crescent Point Energy	Ph: 403-767-6971 Cell: 403-510-8353 mpeacock@crescentpointenergy.com
Coop 2 Alternate Chair		
Coop 2 Alternate Chair	Duane Bolin Ember Resources Ltd	Ph: 403-361-2225 Cell: 403-823-0532 dbolin@emberresources.com
Coop 2 Alternate Chair	Walter Nasse Inter Pipeline Ltd	Cell: 403-501-4342 walter.nasse@interpipeline.com
Coop 3 Chair	Matt Martens Gibson Energy	Ph: 780-888-7606 Cell: 780-888-7382 mmartens@gibsonenergy.com
Coop 3 Alternate Chair	Tim Abel Inter Pipeline Ltd	Ph: 780-888-2606 Cell: 780-888-1900 tim.abel@interpipeline.com
Coop 3 Alternate Chair	Sheldon Burns Certus Oil & Gas Inc	Cell: 403-318-8091 sheldon.burns@certusoil.com
Coop 3 Alternate Chair	Jack Dawbin Ember Resources Ltd	Ph: 403-788-2350 Cell: 403-620-1107 jdawbin@emberresources.com

CHAIRS AND ALTERNATE CHAIRS

Coop 4 Chair	Terry Willoughby Ridgeback Resources	Ph: 780-514-7083 Cell: 780-621-0724 twilloughby@ridgeback.com
Coop 4 Alternate Chair	Ryan Pearson Obsidian Energy	Ph: 780-542-8683 Cell: 780-268-4072 ryan.pearson@obsidianenergy.com
Coop 4 Alternate Chair	Ryan Bauer Plains Midstream Canada ULC	Ph: 780-400-2680 Cell: 780-222-9345 ryan.bauer@plainsmidstream.com
Coop 4 Alternate Chair	Mark Jones Inter Pipeline Ltd	Ph: 780-449-2269 Cell: 780-720-2561 mark.jones@interpipeline.com
Coop 5 Chair	Arlen Hogg Canadian Natural Resources Ltd	Ph: 780-832-4190 Cell: 587-298-7353 arlen.hogg@cnrl.com
Coop 5 Alternate Chair	Mike Doerksen Energy Transfer Canada	Cell: 780-622-7358 michael.doerksen@energytransfer.com
Coop 5 Alternate Chair	Sandra Miller ARC Resources Ltd	Ph: 780-512-2061 Cell: 780-296-5822 smiller@arcresources.com
Coop 6 Chair	Chris Labrie Plains Midstream Canada	Ph: 780-849-3800 Ext. 2015 Cell: 780-805-5480 chris.labrie@plainsmidstream.com
Coop 6 Alternate Chair	Neale Rushoway Cardinal Energy Ltd.	Cell: 780-333-5195 nealer@cardinalenergy.ca
Coop 6 Alternate Chair	James Zuk Canadian Natural Resources Ltd	Ph: 780-333-7832 Cell: 780-333-5851 james.zuk@cnrl.com
Coop 6 Alternate Chair	Rodney Cardinal Pembina Pipeline Corporation	Ph: 780-849-7553 rcardinal@pembina.com

CHAIRS AND ALTERNATE CHAIRS

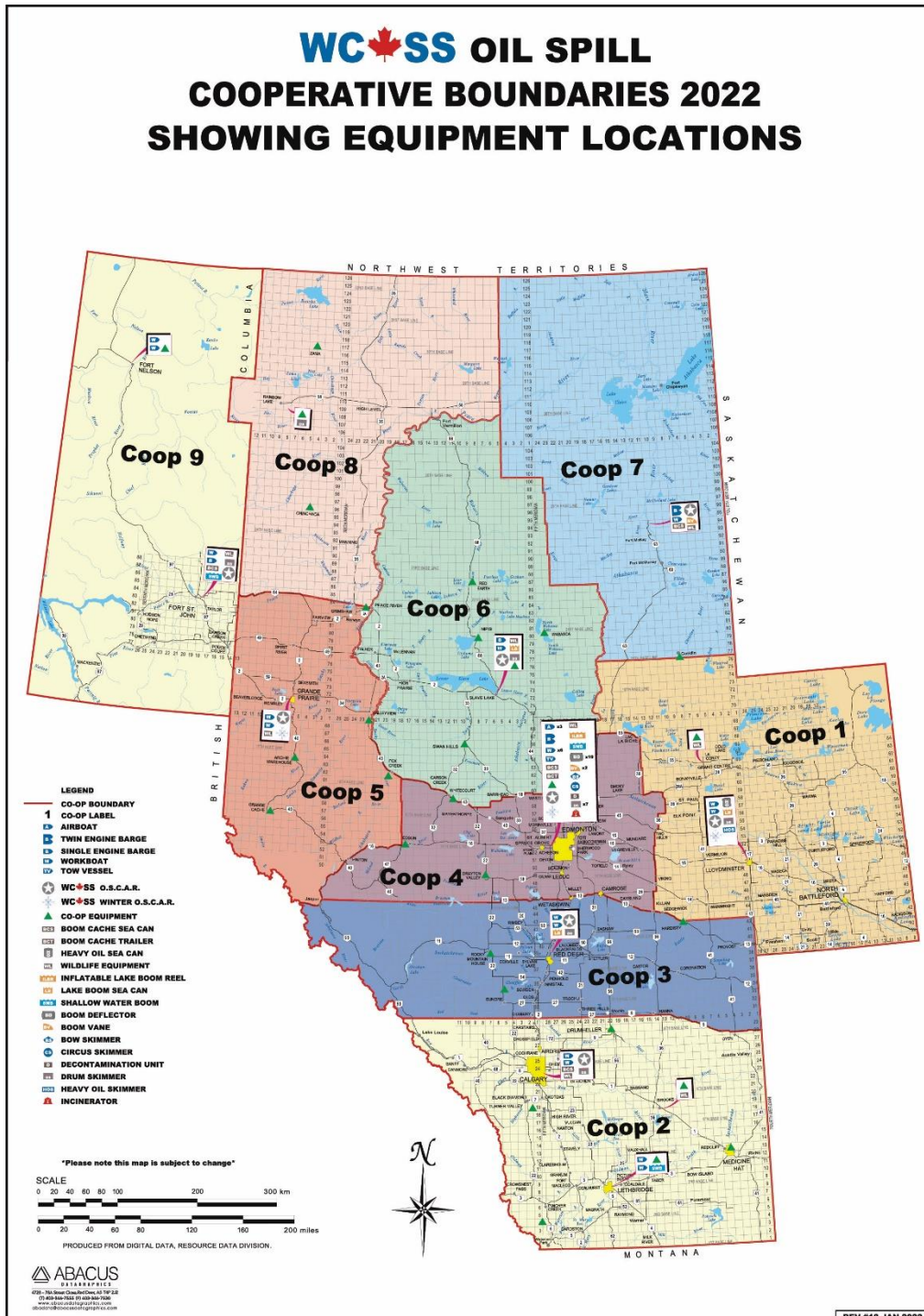
Coop 7 Chair	Morgan Alexander Wolf Midstream	Ph: 780-997-4063 Cell: 780-991-0582 malexander@wolfmidstream.com
Coop 7 Alternate Chair	Kevin Mosich Pembina Pipeline	Ph: 780-743-2580 Cell: 780-520-1249 kmosich@pembina.com
Coop 8 Chair	James Barnhill Cenovus Energy	Ph: 780-956-8052 Cell: 780-956-1814 james.barnhill@cenovus.com
Coop 8 Alternate Chair	Matt Neudorf Plains Midstream Canada	Ph: 780-618-3805 matthew.neudorf@plainsmidstream.com
Coop 9 Chair	Carl Reimer North River Midstream	Ph: 250-262-3456 Cell: 250-262-8752 carl.reimer@northrivermidstream.com
Coop 9 Alternate Chair	Don Brown Canadian Natural Resources Ltd	Cell: 250-775-0364 don.brown@cnrl.com

WCSS ADMINISTRATORS

ADMINISTRATORS		
Administrator - Coop 1 - Coop 2 - Coop 3 - Coop 4 - Coop 5 - Coop 7 - Coop 8 - Coop 9	Shannon Jarrell PO Box 503, 3545 32 nd Ave NE Calgary, AB T1Y 6M6	Ph: 587-393-9622 Cell: 403-650-4765 shannon.jarrell@wcss.ab.ca
Administrator - Coop 6	April Poirier ADP Admin Services Box 656 Swan Hills, AB T0G 2C0	Ph: 780-333-7804 Cell: 780-333-8622 april.poirier@cnrl.com

2.3.2 MAP OF PROVINCIAL COOPERATIVE BOUNDARIES

- Identify area of interest.
- Refer to the following map that outlines Cooperative geographic areas.
- Contact WCSS as necessary: Box 503, 3545 - 32 Avenue N.E., Calgary, Alberta T1Y 6M6
Telephone: 587-393-9620 E-Mail: info@wcss.ab.ca Website: www.wcss.ab.ca



2.3.3 WCSS EQUIPMENT CUSTODIAN CONTACT LIST

To view a detailed list of WCSS Equipment Inventory, please refer to www.wcss.ab.ca

Coop	Equipment Storage Location	Custodian	Contact Information	Equipment	Transportation Requirements
1	5502 – 63 Avenue Lloydminster, AB T9V 3T8	Bry-Tan Trucking Ltd.	24hr: 780-875-9250 Alternate Contact: Mike Savoy Cell: 780-205-1471	52' OSCAR Trailer	semi-tractor
				40' Heavy Oil Sea Can 9'6"h	winch tractor/low-boy trailer
				Heavy Oil Skimmer & Power Pak (inside 40' Heavy Oil Sea Can)	See above
				Work Boats (2)	½ ton truck w/ 2" ball hitch
				20' Winter OSCAR Trailer	1-ton w/ 2-5/16" ball hitch
				Drum Skimmer w/ Power Pak	½ ton truck
				40' Lake Boom Sea Can	winch tractor/trailer
	Cenovus Parking Lot. Junction of Hwy 41 & 55 at 4006 Hwy 55 La Corey, Alberta T0A 2E0	Cenovus Energy	Marcus Tobin Cell: 780-573-7110	20' ISRU Sea Can	winch tractor/trailer
			16' Wildlife Trailer	½ ton truck w/ 2" ball hitch	

Coop	Equipment Storage Location	Custodian	Contact Information	Equipment	Transportation Requirements
2	5535 – 56 Ave SE Calgary, AB T2C 3X6	Proactive Environmental	Kale Haupt Cell: 780-514-9858 24hr: 403-203-3336 Toll Free: 1-877-471-3336	40' Boom Cache Sea Can	winch tractor/trailer
				Boom Deflector (2)	½ ton truck
				52' OSCAR Trailer	semi-tractor
				Work Boats (2)	½ ton truck w/ 2" ball hitch
				Drum Skimmer w/ Power Pak	½ ton truck
				16' Wildlife Trailer	½ ton truck w/ 2" ball hitch
	311 – 33 Street N. Lethbridge, AB	Midwest Pumps Ltd.	Adrian Schuurman Cell: 403-795-9985 24hr: 403-329-0427 Ext. 205 Fax: 403-327-4660	20' ISRU Sea Can	winch tractor/trailer
				400' Shallow Water Boom	½ ton truck
				Work Boats (2)	½ ton truck w/ 2" ball hitch
				Turner Valley Gates (5)	½ ton truck
	Bay #2, 600 Industrial Road Brooks, AB	Absolute Safety	Rob Drader 24hr: 403-362-7100 Cell: 403-362-1945	24' ISRU Trailer	1-ton truck w/ 2-5/16" ball hitch
				14' Wildlife Trailer	½ ton truck w/ 2" ball hitch
	240 Grove Pl. Drumheller, AB T0J 0Y0	Performance Steam Ltd	Lee Borsheim 24hr: 403-820-0582	24' ISRU Trailer	1-ton w/ 2-5/16" ball hitch
Medicine Hat 15-7-13-5 W4M	Enerplus Corp	Cam Miller 24hr: 403-580-7133 Alt: 403-581-8467	24' ISRU Trailer	1-ton truck w/ 2-5/16" ball hitch	
Turner Valley 10-12-19-2 W5M	Crescent Point Energy Corp	Todd Torrens Cell: 403-625-0805 Reed Suitor Ph: 403-601-4041	24' ISRU Trailer	1-ton truck w/ 2-5/16" ball hitch	
Waterton Gas Plant SE ¼ 24-4-1 W5M	Pieridae Energy	Maureen Pasion Cell: 403-369-0122 Control Room: Non-Emergency Ph: 403-627-2602 24hr: 403-627-4200* (*Emergency Only*)	24' ISRU Trailer	1-ton truck w/ 2-5/16" ball hitch	

Coop	Equipment Storage Location	Custodian	Contact Information	Equipment	Transportation Requirements
3	Garnet's Oilfield Trucking Inc 4025 Charles Street Red Deer County, AB T4S 2B3	GWG Investments Inc	Danny Conn Cell: 403-391-6904 24hr: 1-403-346-7668 Fax: 403-340-3848	52' OSCAR Trailer	Semi-tractor
				Workboats (2)	½ ton truck w/ 2" ball hitch
				40' Lake Boom Sea Can	winch tractor/trailer
				Drum Skimmer w/ Power Pak	½ ton truck
	71031 Twp Rd 39-2 Rocky Mountain House, AB T4T 1B4	Challand Excavating Ltd.	Clint Challand 24hr: 403-845-2469 Cell: 403-845-0018 Fax: 403-845-4844	20' ISRU Sea Can	winch tractor/trailer
	Sundre NE ¼ 21-34-5 W5M Hamlet at James River Bridge, AB T0M 1C0	Al Saunders Contracting Inc.	Monica Lavery Cell: 587-998-3705 24hr: 403-638-4261 Kent Saunders (alt) Ph: 403-638-8111	24' ISRU Trailer	1-ton w/ 2-5/16" ball hitch
	Range Rd 100A Hardisty, AB T0B 1V0	Bromby Welding	Gary Bromby 24hr/Cell: 780-888-1095 Office: 780-888-0005	20' ISRU Sea Can	winch tractor/trailer

Coop	Equipment Storage Location	Custodian	Contact Information	Equipment	Transportation Requirements
4	10499 David Rd. Acheson, AB T7X 6A4	JVC Group	24hr: 780-455-0776 David King: 780-514-0092 Rob Ferretti 780-237-6682	52' OSCAR Sea Can (14,500kg)	winch tractor/trailer
				20' ISRU Sea Can	winch tractor/trailer
				16' Winter OSCAR Trailer	¾ ton truck w/ 2-5/16" ball hitch
				45' Boom Cache Trailer	semi-tractor
				40' Boom Cache Sea Can	winch tractor/trailer
				Work Boats (7)	½ ton truck w/ 2" ball hitch
				Twin Engine Barge w/ Bow Skimmer	1-ton truck w/ 2-5/16" ball hitch, elec. brakes
				Air Boats (3)	¾ ton truck w/ 2-5/16" ball hitch
				16' Wildlife Trailer	½ ton truck w/ 2-5/16" ball hitch
				20' Decontamination Sea Can	winch tractor/trailer
				Incinerator	semi-tractor
				Inflatable Lake Boom Reel Trailer	1-ton truck w/ 2-5/16" ball hitch, elec. brakes
				Tow Vessel	½ ton truck w/ 2" ball hitch
				Shallow Draft Boom Vane (2)	½ ton truck
				Drum Skimmers (7) w/ Power Paks	½ ton truck
				Circus Skimmer w/ Power Pak	½ ton truck w/ deck
Boom Deflectors (8)	½ ton truck				
400' Shallow Water Boom	½ ton truck				
5612 – 58 Ave Drayton Valley, AB	Hell Hounds Hauling	Calvin Hlushak Ph: 780-621-6301	20' ISRU Sea Can 9'6" high	winch tractor/low-boy trailer	
Edson 01-13-053-18 W5M 53206 RR 180 Yellowhead County	Formula Powell	Sean Smith 24hr: 780-712-6110, Press 3 for dispatch Cell: 780-712-3564	20' ISRU Sea Can	winch tractor/trailer	
Whitcourt 5920 – 11A RR114B SE-17-59-11 W5M	Mega C	Carl Lehman Cell: 780-778-1781 Pat Lehman Cell: 780-778-0633 Terry Sekulich 780-779-7046	20' ISRU Sea Can	winch tractor/trailer	

Coop	Equipment Storage Location	Custodian	Contact Information	Equipment	Transportation Requirements
5	9601 – 156 Ave Grande Prairie, AB	Clean Harbors	Ph: 780-532-4331 Fax: 780-532-4405	52' OSCAR Trailer	semi-tractor
				16' Winter OSCAR Trailer	¾ ton truck w/ 2-5/16" ball hitch
				Workboats (2)	½ ton truck w/ 2" ball hitch
				14' Wildlife Trailer	½ ton truck w/ 2-5/16" ball hitch
	Archie Warehouse 07-04-64-05-W6M (near Grande Prairie)	ARC Resources Ltd.	24hr: 587-343-5824 Sandra Miller 780-296-5822	20' ISRU Sea Can	winch tractor/trailer
	97 Street & Hoppe Avenue Grande Cache	Performance Vac & Tank (PVT) GP	Marko Hackenberg 24hr: 780-827-5353 Cell: 780-827-6061	20' ISRU Sea Can	winch tractor/trailer
	#21 Cessna Road, Airport Industrial Park Westhill Peace River, AB	Avenge Energy Services Inc.	24hr Dispatch: 780-617-0555	20' ISRU Sea Can	winch tractor/trailer
Pembina Valleyview Pump Station 12-10-69-22-W5M	Pembina Pipelines	24hr: 780-524-3938 (Main contact. Goes to Edmonton after hours; ask for foreman on call) Dwayne Jones Cell: 780-524-8877	20' ISRU Sea Can	winch tractor/trailer	
Fox Creek 14-01-62-20 W5M	Energy Transfer Canada - Kaybob Amalgamated Gas Plant	Michael Doerksen 24hr: 780-622-6274 Ph: 780-622-6250 Cell: 780-622-7358	20' ISRU Sea Can (9'6" high)	winch tractor & low boy trailer	

Coop	Equipment Storage Location	Custodian	Contact Information	Equipment	Transportation Requirements
6	207 Caribou Trail NW Slave Lake, AB	Slave Lake Safety	Ken Bolan Cell: 780-849-1111 24hr: 780-849-4214	Work Boat (1) Single-engine Barge (1)	½ ton truck w/ 2" ball hitch 1-ton truck w/ 2-5/16" ball hitch, elec. brakes
	1400 Tamarack Road, Slave Lake, AB	Jaymar Hauling (88) Ltd.	Ken Bolan Cell: 780-849-1111 24hr: 780-849-4214	40' Lake Boom Sea Can	winch tractor/trailer
				Drum Skimmer w/ Power Pak	½ ton truck
				52' OSCAR Sea Can (14,500kg)	winch tractor/trailer
				20' Wildlife Sea Can	winch tractor/trailer
	Nipisi 02-11-80-08 W5M	Canadian Natural Resources Ltd.	24hr: 780-849-7025 Cell: 780-805-5379 Jason Rayner Ph: 780-849-7027 Cell: 780-805-4880 Fax: 780-849-7003	20' ISRU Sea Can	winch tractor/trailer
	Red Earth 9-18-87-08 W5M	Plains Midstream Canada ULC	Chris Labrie Cell: 780-805-5480 Ph: 780-849-3800 ext. 2015 24hr: 780-649-2122	20' ISRU Sea Can	winch tractor/trailer
2270 Airport Rd Wabasca, AB	KMC Oilfield Services	24hr: 780-891-7100 Darren Myshak Cell: 780-974-2444	20' ISRU Sea Can	winch tractor/trailer	
5211 Drill Street Swan Hills, AB	KMC Oilfield Services	24hr: 780-891-7100 Darren Myshak Cell: 780-974-2444	20' ISRU Skid Unit	winch tractor/trailer	

Coop	Equipment Storage Location	Custodian	Contact Information	Equipment	Transportation Requirements
7	Lot #119, Fort McKay Caribou Industrial Park 09-19-094-10 W4M	Clean Harbors	James Hein Ph: 780-743-0222, Ext. 2201 (24 hr.) Cell: 780-598-2111	Work Boat	½ ton truck w/ 2" ball hitch
				Deep Draft Boom Vane	½ ton truck
				Twin-engine Barge	1-ton truck w/ 2-5/16" ball hitch
				40' OSCAR Sea Can	winch tractor/trailer
				14' Wildlife Trailer	½ ton truck w/ 2" ball hitch
	40' Boom Cache Sea Can	winch tractor/trailer			
	177 Northland Drive Conklin, AB T0P 1H1	Wolf Midstream	Morgan Alexander 24 hr. 1-866-987-3899 Cell: 780-991-0582	20' ISRU Sea Can	winch tractor/trailer

Coop	Equipment Storage Location	Custodian	Contact Information	Equipment	Transportation Requirements
8	Rainbow Lake (Husky Oil Operations Yard) 10-10-109-08 W6M	Husky Energy	James Barnhill Ph: 780-956-8052 Cell: 780-956-1814 Fax: 780-956-8088	20' ISRU Sea Can	winch tractor/trailer
				Drum Skimmer w/ Power Pak	½ ton truck
	1072 Aspen Dr. Zama City, AB	Muzzy's Contracting	Bruce Muzichuk Cell: 780-926-9797	20' ISRU Sea Can	winch tractor/trailer
Chinchaga 1-24-96-05 W6M	Canadian Natural Resources Ltd. Chinchaga Gas Plant	CNRL Chinchaga Gas Plant Ph: 780-836-3364 ext.25 Don: 780-836-6223 Randy: 780-625-8642	20' ISRU Sea Can	winch tractor/trailer For transportation call: Silvertip Oilfield Services Ph: 780-836-3792	

Coop	Equipment Storage Location	Custodian	Contact Information	Equipment	Transportation Requirements
9	6715 – 85 th Ave. Fort St. John, BC V1J 4J3	Clean Harbors	Shawn Doré 24hr: 250-785-4577 Cell: 250-261-9404 Fax: 250-785-4571	52' OSCAR Trailer	semi-tractor
				Single-engine Barge	1-ton truck w/ 2-5/16" ball hitch, elec. brakes
				40' Boom Cache Sea-can	winch tractor/trailer
				20' Wildlife Sea Can	winch tractor/trailer
				Work Boat	½ ton truck w/ 2" ball hitch
				Drum Skimmer w/ Power Pak	½ ton truck
				400' Shallow Water Boom	½ ton truck
	4850 – 46 Ave. Fort Nelson, BC V0C 1R0	Troyer Ventures Ltd	24hr: 250-774-5332	20' ISRU Sea Can	winch tractor/trailer
				Workboats (2)	½ ton truck w/ 2" ball hitch